

Simplify your cabinet testing

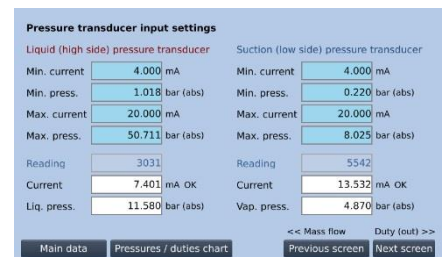
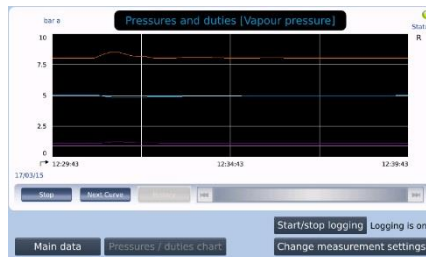
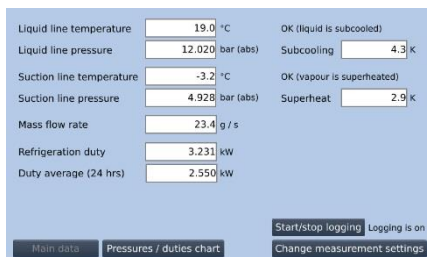
A refrigeration duty meter from ECH Engineering will automatically calculate refrigeration duties (instantaneous and 24 hr average). It will display and record these, together with other system properties in an accessible format, exceeding requirements of EN23953.

The refrigeration duty meter makes the current state of the system on test clear, indicating system convergence or providing early indicators of performance issues, such as frosted evaporators.

The system is easy to use and simple to set up.

Features include:

- Simple touch screen interface (800 x 480, 5:3 aspect WVGA screen)
- Main screens with numerical and charted data
- Sub-screens allow access to logging and settings/calibrations
- Two (configurable) voltage/current outputs (can be used to send values such as instantaneous duty to other data logging systems)
- Can be used with a variety of refrigerants (by changing SD card)
- Data logging to SD card (FAT 32 formatted microSD card)
- Can be remote controlled over Ethernet (via VNC)
- Data can be retrieved over Ethernet (via FTP)
- Compatible with most mass flow meters and pressure transducers
- Temperature sensors (PT100) are included



Duty meter example screens (main data display, chart display and pressure input setup screens)